







# The Shoreline

1397 SQ. FT



Floor plans are subject to change without notice within legal standard E.&.O.E

## Why Pent Towns?

We're excited to introduce Pent Towns; Matti Homes and Sakmet Developments' most affordable collection of townhouses in the developing town of Penetanguishene, ON. Combining small town charm with the convenience of urban living, Pent Towns is ideal for everybody. Located 6 mins away from the historic Discovery Harbor, and only 9 minutes away from Downtown Midland, this is the perfect getaway spot for boaters and nature lovers to look forward to endless journeys and memories. Upon completion, the community will consist of 36 freehold townhouses surrounded by marinas, playgrounds, scenic trails, schools and entertainment.



2855 Markham Rd, Suite 300 Toronto ON M1X0C3









# The Midnight

1737 SQ. FT

## Why Pent Towns?

We're excited to introduce Pent Towns; Matti Homes and Sakmet Developments' most affordable collection of townhouses in the developing town of Penetanguishene, ON. Combining small town charm with the convenience of urban living, Pent Towns is ideal for everybody. Located 6 mins away from the historic Discovery Harbor, and only 9 minutes away from Downtown Midland, this is the perfect getaway spot for boaters and nature lovers to look forward to endless journeys and memories. Upon completion, the community will consist of 36 freehold townhouses surrounded by marinas, playgrounds, scenic trails, schools and entertainment.



Floor plans are subject to change without notice within legal standard E.&O.E



2855 Markham Rd, Suite 300 Toronto ON M1X0C3







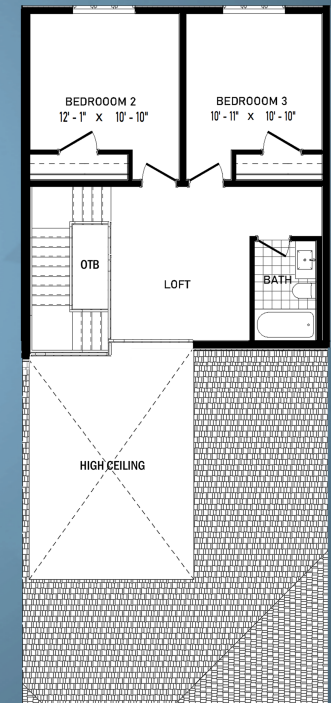
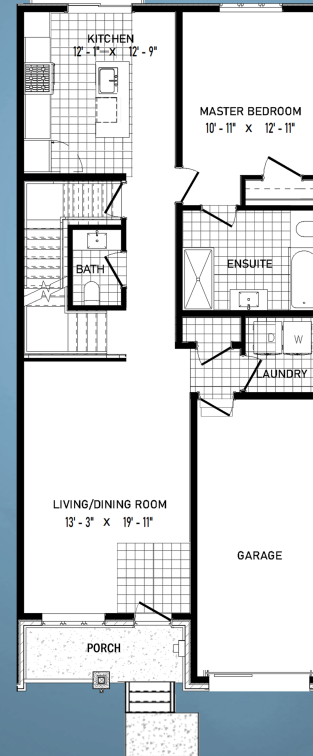
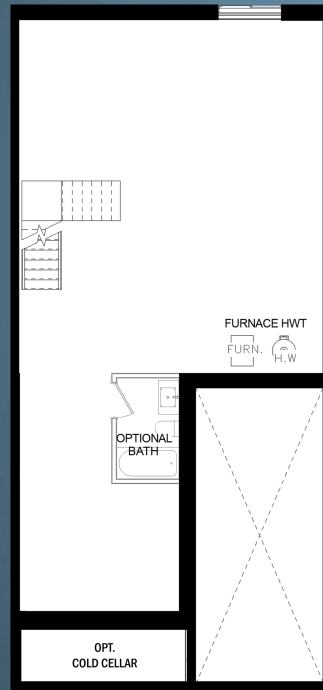


# The Ravine

1727 SQ. FT

WALKOUT BASEMENT IF GRADE PERMITS

OPTIONAL DECK



BASEMENT

FIRST FLOOR

SECOND FLOOR

Floor plans are subject to change without notice within legal standard E.&.O.E

## Why Pent Towns?

We're excited to introduce Pent Towns; Matti Homes and Sakmet Developments' most affordable collection of townhouses in the developing town of Penetanguishene, ON. Combining small town charm with the convenience of urban living, Pent Towns is ideal for everybody. Located 6 mins away from the historic Discovery Harbor, and only 9 minutes away from Downtown Midland, this is the perfect getaway spot for boaters and nature lovers to look forward to endless journeys and memories. Upon completion, the community will consist of 36 freehold townhouses surrounded by marinas, playgrounds, scenic trails, schools and entertainment.



2855 Markham Rd, Suite 300 Toronto ON M1X0C3